



ABOUT

WHEN YOU NEED OLD WORLD CHARM TO MEET MODERN FACILITIES THEN YOU NEED NOT LOOK FURTHER THAN THIS BEAUTIFUL SPACE WITH ITS STUNNING OREGON FLOORS. FROM FILM, STILLS TO EVEN HOSTING YOUR DREAM WEDDING, THIS SPACE IS HIGHLY ADAPTABLE. THE CHURCH HAVE EVEN BEEN ABLE TO ACCOMMODATE SOME CRANE SET-UPS THANKS TO THE HIGH CEILINGS AND WIDE DOORWAY.

NOTES TO REMEMBER:

220 M2 (20M X 11M)
HEIGHT APEX: 9M
ACCESS: 1.1M X 2.3M
CURVE: 5.5M X 6M X 9M
GALLERY SPACE

ELECTRICAL

STUDIO POWER OUTPUT:
STUDIO: THE CHURCH
125 AMP / 3 PHASE

STUDIO: THE GALLERY
32 AMP / SINGLE PHASE

STUDIO INCLUSIONS

MAKE-UP ROOM AND KITCHEN
WIFI
SOUND SYSTEM (TO MINI JACK)
VARNISHED OREGON FLOORS
BLACK OUT CAPABILITY

- BAR FRIDGE
- CUTLERY & CROCKERY (PAX 15)
- COFFEE & TEA ON REQUEST
- 2 X TRESTLE TABLES
- 1 X CLOTHING RAIL
- 1 X STEAMER



THE GALLERY

THE GALLERY SPACE IS INCLUDED WITH CHURCH RENTAL



NOTES TO REMEMBER

70M² SPACE (12M X 5.8M)
HEIGHT :4M

ELECTRICAL

STUDIO POWER OUTPUT:
STUDIO: THE GALLERY
16 AMPS/ 3 PHASE
(MORE ON REQUEST)

STUDIO INCLUSIONS

MAKE-UP ROOM AND KITCHEN
WIFI
CONCRETE FLOORING
BLACKOUT CAPABILITIES

- BAR FRIDGE
- CUTLERY & CROCKERY (PAX 15)
- COFFEE & TEA ON REQUEST
- 2 X TRESTLE TABLES
- 1 X CLOTHING RAIL
- 1 X STEAMER

THE COURTYARD

THIS SPACE CAN BE EXCLUSIVELY BOOKED AS AN ADD ON WITH THE CHURCH ONLY.

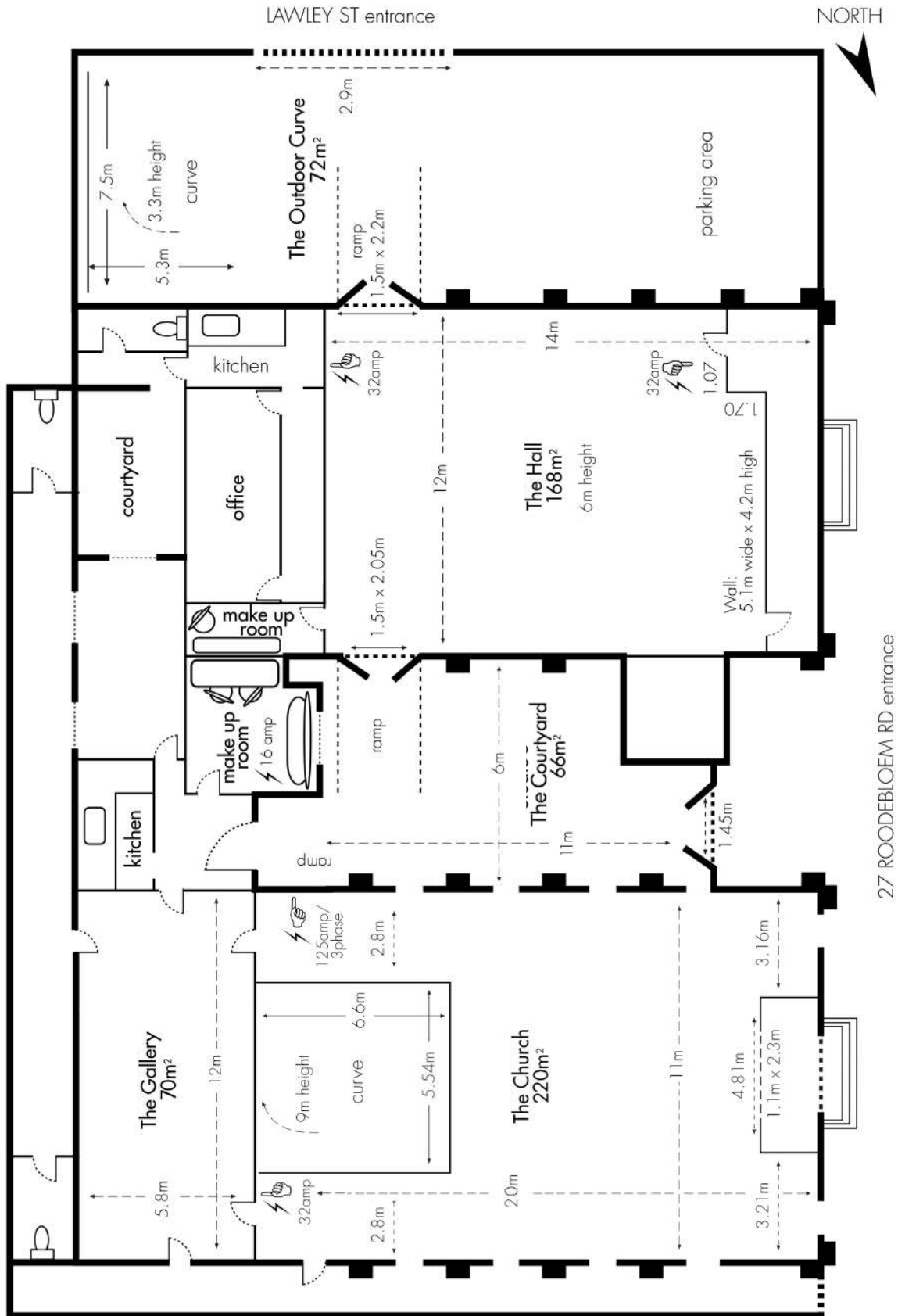
NOTES TO REMEMBER

66M² (6M X 11M)
ACCESS: (2.4M X 1.45M)

STUDIO INCLUSIONS

WIFI
EYE HOOKS FOR SECURING TENT COVER







THE HALL

SLIGHTLY LESS GRANDIOSE THAN ITS NEXT-DOOR NEIGHBOUR, BUT NOT TO BE UNDERESTIMATED. WITH VARNISHED AMERICAN OAK FLOORS AND 6M HIGH CEILINGS; THIS SPACE CAN BE TRANSFORMED INTO ANYTHING FROM A BUSTLING BREAKFAST BUFFET TO AN EXHIBITION AREA. ADD A PAPER BACKDROP TO THE MIX AND YOU HAVE A LOVELY HIGH FASHION SET UP. THIS IS THE MOST AFFORDABLE OPTION FROM OUR SELECTION OF STUDIO SPACES.

NOTES TO REMEMBER

168 M2 (14M X 12M)
HEIGHT : 6M
ACCESS : 1.49M X 2.65
FLAT WALL: 5.1M WIDE X 4.2M

ELECTRICAL

STUDIO: THEHALL
32 AMP / 16 AMP

STUDIO INCLUSIONS

SOUND SYSTEM (TO MINI JACK)
MAKE-UP ROOM
KITCHEN
WIFI
AMERICAN OAK FLOORS
BLACK OUT CAPABILITY

- BAR FRIDGE
- CUTLERY & CROCKERY (PAX 15)
- COFFEE & TEA ON REQUEST
- 2 X TRESTLE TABLES
- 1 X CLOTHING RAIL
- 1 X STEAMER



OUTDOOR CURVE

WE RECOMMEND BOOKING THE 44M2 OUTDOOR CURVE WITH THE HALL STUDIO FOR THE BEST OF BOTH WORLDS.

THIS SPACE CAN BE EXCLUSIVELY BOOKED AS AN ADD ON WITH THE HALL ONLY.

NOTES TO REMEMBER

72 M2 (9M X 7.9M)
CURVE : 44M2 (7.9M X 5.6M)
CURVE HEIGHT: 3.3M
ACCESS: 3.9M WIDE

ELECTRICAL ON REQUEST

STUDIO INCLUSIONS
SOUND SYSTEM (TO MINI JACK)
MAKE-UP ROOM
KITCHEN
WIFI
AMERICAN OAK FLOORS
BLACK OUT CAPABILITY



